

# Six Mile Cypress Slough Preserve

Photo by Keith Ridge



**FRIENDS OF  
SIX MILE CYPRESS  
SLOUGH PRESERVE**

**ANNUAL MEETING  
MARCH 28, 2018  
INTERPRETIVE CENTER**

Photo by CC Mattingly

# Agenda

**Friends of Six Mile Cypress Slough Preserve  
Annual Meeting - March 28, 2018  
Interpretive Center**

**Welcome**

**Theresa Roake, President**

**Announcements**

**Annual Report**

**Theresa Roake, President**

**Nominating Committee Report**

**Sabine Vandenhende, Vice President**

**Election**

**General Membership**

**Introduction of Board of Directors**

**Introduction of Bob Repenning, Coordinator, Land Stewardship**

***“My Life in the Slough”***

Photo by John Swisher

# Board of Directors

Theresa Roake	President
Sabine Vandenhende	Vice President
Jean Labriola Scholz*	Treasurer
Barbara Shearer**	Secretary
Lyn Brown	
Donna Cressman	
Terri Krass	
Charles O'Connor	
Bud Schopp	
Steve Tutko	
Heather Gienapp, Lee County Parks and Recreation Liaison	

\*Jean Labriola Scholz is finishing Frank Murray's term as Treasurer as of January 1, 2017 due to Frank's retirement from the position. She will move to Advisory Board effective April 1, 2018.

\*\* Appointed by Board in January, 2018 as Secretary. She will be formally elected as Director at Annual Meeting.

# Six Mile Cypress Slough Preserve Staff

- Annisa Karim, Manager
- Christine Bailey, Senior Supervisor
- Heather Gienapp, Supervisor
- Andrea Naccarato, Senior Program Specialist
- Bob Repenning, Land Steward
- Andy Gurri, Senior Maintenance Specialist

# President's Message

Friends of Six Mile Cypress Slough Preserve  
Annual Meeting March 28, 2018

Congratulations to the Friends members, Board of Directors and the staff at the Slough. We have had another wonderful year at Six Mile Cypress Slough Preserve. When I took this job last year I said I had mighty big tracks to fill. Carolyn Babb, Past President has provided much needed support through this transition. I also thank the rest of our Board and Staff for helping me adjust and thrive in a new role.

The Friends provided over \$7,500 in support of the staff and the Slough in 2017. While the monetary support is greatly appreciated by staff, the hours that our members spend at the Slough provide so much support it is hard to compute. The Board of Directors and the members put in many, many hours at and for the Slough. The list of accomplishments is getting longer and longer as you will see on the following page.

Friends Corner volunteers sold almost \$20,000 in merchandise in 2017. That's a lot of Grandma books, puppets, t-shirts and jewelry. The store is staffed by many eager and talented Friends members and volunteers. Thanks to all of the workers for their efforts. We couldn't do it without their hard work.

Thank you to the Lee County Parks and Recreation staff and to Lee County for our continued successful partnership. It is strong and we all work well together with the common goal of protecting, preserving and promoting the Slough.

To Heather Gienapp, Andrea Naccarato, Bob Repenning, Andy Gurri, Annisa Karim and Christine Bailey thank you for all you do for the Friends and for the Slough. I hope our partnership continues to be as successful and productive as it has been over the years.

Thank you to all of the Friends members. The monetary support, moral support and volunteer efforts by the members enable the Board of Directors to continue in our mission for the Slough. Lastly, I wish to thank the Slough itself for providing endless hours of serene pleasure for all of us. 2017 promises to be as big and beautiful as the past year.

Hope to see you out on the trail!

Theresa Roake, President

# Friends Accomplishments 2017

**Direct Support to the Slough of over \$7,500 including:**

**Camp scholarships for 15 campers**

**Camp supplies**

**Camp intern stipends**

**Camp speakers honoraria**

**Volunteer Hurricane Irma Cleanup**

**Rocks added to Rock and Stroll Garden**

**Photo contest**

**Books for Blake Cadkin Resource Library**

**Website Updates**

**Seasonal displays Interpretive Center**

**Land Stewardship Intern Stipends**

**New Trail Storage**

**Resource library reorganization**

**Gathering speakers including:**

**Dr. Win Everham, Florida Gulf Coast University**

**Dr. Serge Thomas, Florida Gulf Coast University**

**Robert Repenning, Land Steward, Lee County**

**Alexis Horn, Sierra Club Panther Habitat ,**

**Campaign Coordinator**

**Volunteer Appreciation Luncheon**

**Volunteer thank you gifts**

**Volunteer Education**

**Funded staff education opportunities**

**Friends Corner sales**

**Butterfly garden maintenance and plantings**

**University of Georgia students support**

**Funding for trail signage and markers**

**Funding for new guidebooks for boardwalk**

**Adopt A Highway Participation**

**Complete 2017 Annual Report Available at  
[www.Sloughpreserve.org](http://www.Sloughpreserve.org)**

**Friends of Six Mile Cypress Slough Preserve  
Asset Statement  
December 31, 2017**

BookstoreChecking	\$67,618.04
Main Checking*	\$354.30
Savings	\$0.08*
Bookstore Inventory	\$12,496.42
Store Cash	\$550.00
Certificate of Deposit	\$10,000.00
Certificate of Deposit	\$10,000.00
Certificate of Deposit	\$10,000.50
Certificate of Deposit	\$25,000.00
Total Assets	\$136,019.34

\*We are working toward consolidating checking accounts and moving more assets into Certificates of Deposit.



# Membership

## Membership Report 2017

Friends Annual Meeting March 28, 2018

Annual Membership Snapshot	As of 3/24/13	As of 3/9/14	As of 3/20/15	As of 3/20/16	As of 3/20/17	As of 3/12/18
Lifetime	3	3	3	3	3	3
Honorary	11	13	5	4	3	1
Donor	8	8	4	5	3	0
Guest	0	8	8	12	11	3
Patron \$1000	2	3	5	6	5	1
Sustaining \$500	6	6	6	7	8	3
Corporate Sponsor \$500	1	0	0	0	0	2
Associate \$250	4	4	7	13	14	8
Supporting \$100	36	41	45	44	45	25
Contributing \$50	59	54	52	51	45	25
Individual \$20	76	78	97	102	109	37
Student \$10	3	1	0	0	1	0
Inactive 2+ years	2	2	n/a	n/a	n/a	n/a
Total Membership	211	221	232	247	247	108

Submitted by Lyn Brown

Reduced member numbers due to removing inactive members accumulated over a period of years.

# Communications

*Connections* – Friends newsletter was published three times in 2017 in January, April, and July. Due to Hurricane Irma closure, we did not publish in October.

Contributors included Carolyn Babb, Dotty Brown, Lyn Brown, Janet Bunch, Donna Cressman, Jeff Key, Charles O'Connor, Bob Repenning, Theresa Roake, Ben and Barbara Shearer Steve Roake, editor and Bruce Bunch, copy editor.

Email communication is used for messages and information to the membership for meetings and events and other information. An email listing of membership is maintained for this purpose.

# Education

## Slough Summer Camp Scholarships 2017

15 scholarships were awarded to local youngsters including scholarships for the Eco-Touring Camp that debuted in 2017. A good time was had by all. In addition, Friends provided many of the supplies for camp as well as honoraria for guest speakers.

## Photo Contest

Another year for our very popular and successful contest – each continues to showcase amazing images taken in the Slough.

## Speakers for 2017

January – **John Cassani**, Ecologist, Waterkeeper Alliance, *Current Water Quality Issues*

February – **Brenda Thomas**, Professor FGCU, *Dendrochronology*

March – **Bob Repenning**, Land Steward, *State of the Slough*

April – **Annisa Karim**, Southwest Florida Cooperative Invasive Species Management Area (CISMA), *Invasive Exotics and Citizen Scientists*

# Friends Corner Store



**TOTAL SALES FOR 2017**

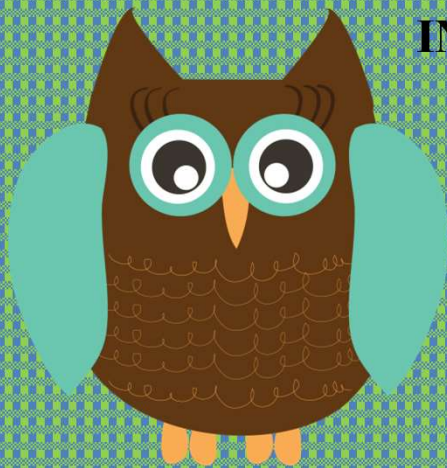
**\$19,074**

**INVENTORY VALUE**

**\$12,497**

**VOLUNTEER WORKERS**

**To all of the volunteers at the Corner  
THANK YOU!!!**



# **Minutes of Annual Meeting**

## **March 22, 2017**

**Friends of Six Mile Cypress Slough Preserve  
Board of Directors  
March 22, 2017 Annual Meeting Minutes**

**Meeting called to order at 7 p.m. by President Carolyn Babb**

**Everyone was welcomed and Carolyn Babb read her message and presented reports from 2016.**

**Theresa Roake, President  
Sabine Vandenhende, Vice President  
Carolyn Babb, Board Member  
Lyn Brown, Board Member  
Jeff Key, Board Member  
Charles O'Connor, Board Member  
Bud Schopp, Board Member  
were elected for a term of two years.**

**Board of Directors was introduced.**

**Bob Repenning, Coordinator, Land Stewardship presented "State of the Slough"**



# BOARD ELECTION

## NOMINATING COMMITTEE REPORT

### March 28, 2018

The Nominating Committee proposes the election of the following Board Members for a term of two years:

- Donna Cressman, Board Member
- Terri Krass, Board Member
- Barbara Shearer, Board Member

Additional nominations from the Floor may be submitted at this time.



**2017  
Annual  
Report**

[www.sloughpreserve.org](http://www.sloughpreserve.org)

Photo by Bob Repping