



Six Mile Cypress Slough Preserve

Photo by Joyce Boucher

A photograph of a cypress slough teeming with birds. Numerous white egrets of various sizes are scattered throughout the scene, some standing in the shallow water and others perched on the dense, tangled cypress roots. A few smaller, darker birds are also visible. The water is calm, reflecting the birds and the surrounding vegetation. The overall atmosphere is serene and natural.

**FRIENDS OF
SIX MILE CYPRESS
SLOUGH PRESERVE**

2019 ANNUAL REPORT

Photo by Cathy Webb

Board of Directors

Theresa Roake President

Sabine Vandenhende Vice President

Nancy Olson Secretary

Sara Maliva Treasurer

Carolyn Babb

Lyn Brown

Donna Cressman

Terri Krass

Bud Schopp

Heather Gienapp Lee County Parks and Recreation Liaison

Six Mile Cypress Slough Preserve Staff

- Annisa Karim, Manager
- Christine Bailey, Senior Supervisor
- Heather Gienapp, Supervisor
- Kelsey Lang, Senior Program Specialist
- Roxanne Taylor, Land Steward
- Ed Butkevich, Senior Maintenance Specialist

President's Message

**Friends of Six Mile Cypress Slough Preserve
2019 Annual Report**

Thank you to the Friends members, Board of Directors and the Staff at the Slough. We have had another successful year at Six Mile Cypress Slough Preserve. I am honored and humbled to be part of such a giving and effective group.

Our Friends group provided over \$15,000 in support of programs at the Slough in 2019. In addition, your Board of Directors and Friends members continue to put in thousands of hours on behalf of the Slough. The Staff works to continually ensure a positive experience for our campers, field trip participants, visitors and members. We hope to inspire folks to care for this beautiful, special place and perhaps preserve others like it.

Thank you again for your support; we are truly grateful. Your support enables the Board of Directors to continue in our mission of protecting, preserving and promoting the Slough. Please read on for more accomplishments in 2019. We're already working on what we can do in 2020!

Hope to see you out on the trail.

Theresa Roake. President

Friends Accomplishments 2019

Direct Support to the Slough of over \$15,000 including:

Books for Library

Camp scholarships for 15 campers

Camp supplies

Camp Speakers honoraria

Public Wet Walks

Funding for school field trip buses and teachers

Rocks added to Rock and Stroll Garden

Photo contest

Full Moon Walk Program Supplies

Funding for trail signage and markers

Wildlife Camera

New volunteer display for Interpretive Center

Gathering speakers including:

Justin Proctor, Birds Caribbean

Dan Quinn, FWC

Roxanne Taylor, Land Steward, Lee County

Charles O'Connor, Board Member & Education Director

Volunteer of the Year

Volunteer thank you gifts

Volunteer Education Support

Self-Guided Trail Brochures

Friends Corner sales

Interpretive Center lighting for evening programs

Garden maintenance and plantings

Adopt A Highway Participation

Potluck Holiday Celebration

Complete 2019 Annual Report Available at

www.sloughpreserve.org

Photo by Kelsey Lang

**Friends of Six Mile Cypress Slough Preserve
Balance Sheet
December 31, 2019**

ASSETS

Bank Accounts

1050 Bank of America Accounts

1050.3 Checking Store 52,343.70

1050.41 Time Deposit CD 8787 10,013.46

1050.42 Time Deposit CD 8826 10,013.43

1050.43 Time Deposit CD 8758 10,013.92

1050.44 Time Deposit CD 0113 25,033.54

1050.45 Time Deposit CD 1023 10,009.16

1050.46 Time Deposit CD 1036 10,009.16

1050.47 Time Deposit CD 1052 10,009.16

1050.48 Time Deposit CD 1065 10,012.82

Total 1050 Bank of America Accounts 147,458.35

Total Bank Accounts \$147,458.35

Friends of Six Mile Cypress Slough Preserve
Balance Sheet
December 31, 2019 (cont'd)

Other Current Assets	
1300 Other Current Assets	
1300.3 Inventory on Hand store	16,781.97
1300.4 Cash on hand bookstore	550.00
Total 1300 Other Current Assets	17,331.97
Total Other Current Assets	\$17,331.97
Total Current Assets	\$164,790.32
TOTAL ASSETS	\$164,790.32
LIABILITIES AND EQUITY	
Total Liabilities	
Equity	
3001 Opening Balance Equity	120,660.20
3010 Retained Earnings	32,119.74
Net Income	12,010.38
Total Equity	\$164,790.32
TOTAL LIABILITIES AND EQUITY	\$164,790.32

Membership

- **Membership remains strong. Our Membership Chair keeps in touch with current members and welcomes new ones.**
- **At year's end in 2019 we had 221 memberships. This figure represents many more individuals. In addition to individual memberships, there are family memberships as well as local clubs and organizations who support our mission.**
- **In 2019, Membership Revenue and Donations totaled over \$20,000.**

Education

Slough Summer Camp Scholarships 2019

15 scholarships were awarded to local youth. Summer Camp had many engaging activities. A new favorite was photography. Many of our volunteers at camp are Friends Members. In addition, Friends provided the supplies for camp as well as funding for guest speakers.

School Field Trips 2019

Funded field trips for Gulf Middle School. Students participated in wet walks, led by Advisory Board Member Charles O'Connor, a science educator in the Lee County school system. In addition, many other school groups visited the Slough for wet walks as the environmental education program gains new life in the Lee County school system.

Photo Contest

Another year for our very popular and successful contest – each continues to showcase amazing images taken in the Slough.

Education cont'd

Summer Public Wet Walks 2019

Public walks were led by Advisory Board Member Charles O'Connor and volunteers. Nearly \$1,000 in donations was collected.

Speakers for 2019

January – **Justin Proctor**, BirdsCaribbean, *Creating Bird Friendly Landscapes*

February – **Dan Quinn**, Biologist, FWC, *Southwest Florida Invasive Animals*

March – **Roxanne Taylor**, Land Steward, *State of the Slough*

April – **Dr. Charles O'Connor**, Advisory Board Member and Lee County Educator, *Florida's Incredible Prehistoric Animals*

Friends Corner Store



TOTAL SALES FOR 2019

\$35,070

INVENTORY VALUE

\$16,782

OVER 30 VOLUNTEER WORKERS

**To all of the volunteers at the Corner
THANK YOU!!!**

Rock and Stroll Garden

Rock and Stroll Garden Report 2019

This year we have added four beautiful new stones to the garden pathways. Many express sentiments for friends and loved ones who have a special connection to the Slough which makes this a very heartfelt project. All the proceeds support the programs funded by the Friends of the Slough with each purchase helping us to continue to promote environmental learning opportunities. We now have a total of 37 stones!

The Garden has added two new arbors and colorful signs to encourage visitors to look for the many butterflies that now make their home among the plantings. We are very fortunate to have the assistance of several volunteers who select and tend to the beautiful butterfly attracting plants. When visiting the garden, be sure to look closely for the various stages of butterfly life.

Applications to purchase a stone are available at the front desk inside the Interpretive Center, on our website, or by contacting me directly. I am always willing to assist with design and art work for the carver to create a unique stone for each occasion. Thank you to all who have supported this project.

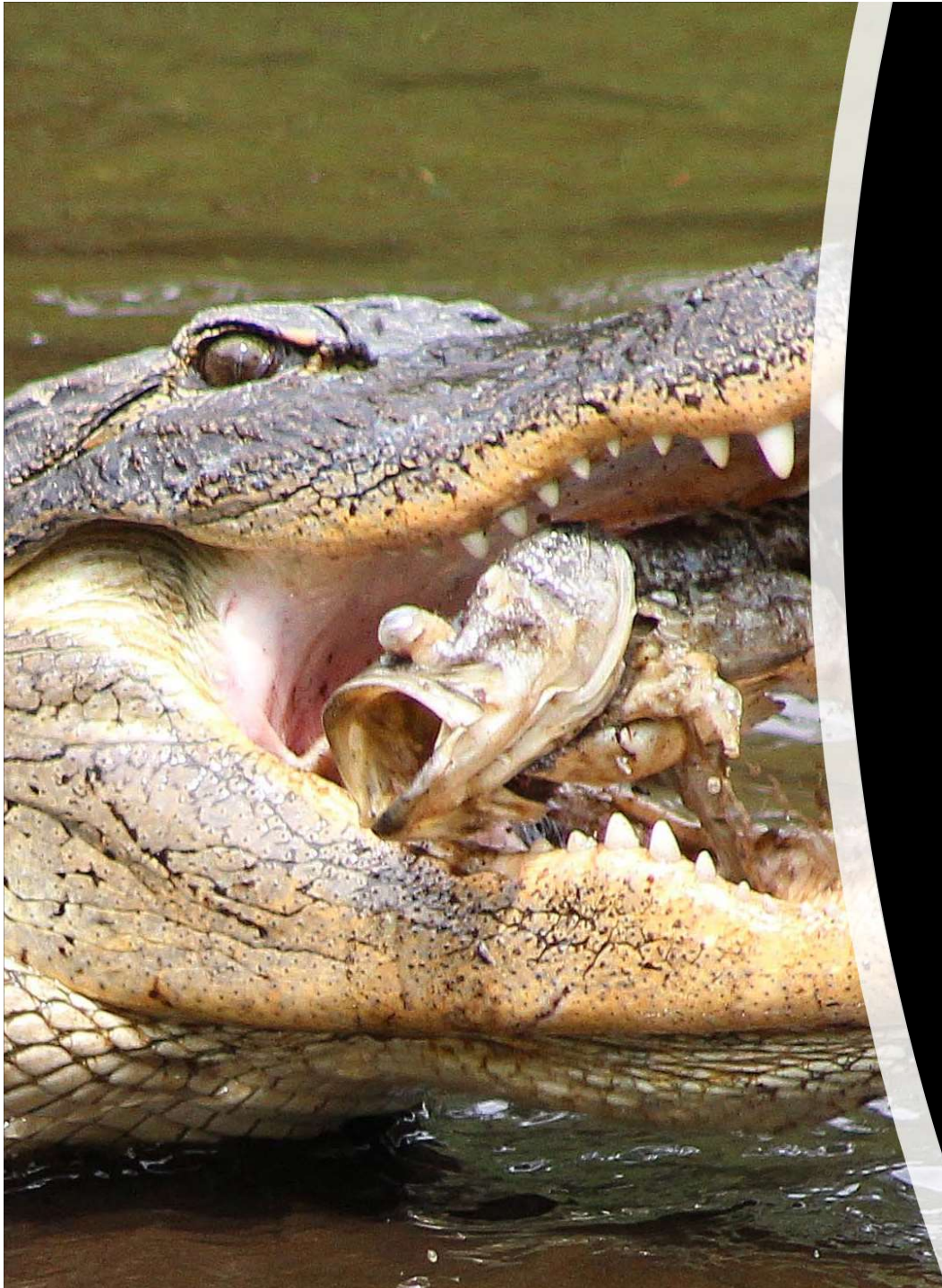
Terri Krass , Board Member



BOARD ELECTION ANNUAL MEETING March 27, 2019

The following Board Members were elected for a term of two years:

- Theresa Roake, President
- Sabine Vandenhende, Vice President
- Sara Maliva, Treasurer
- Nancy Olson, Secretary
- Carolyn Babb, Board Member
- Lyn Brown, Board Member
- Bud Schopp, Board Member



2019 Annual Report

www.sloughpreserve.org

Photo by Carol Claus

